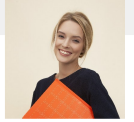


# Sophie Nolan

## GRADUATE BUILDING SERVICES ENGINEER



### CONTACT

London, United Kingdom | [sophie.nolan@gmail.com](mailto:sophie.nolan@gmail.com) | +44 7489 213 674 | [linkedin.com/in/sophienolan-bse](https://www.linkedin.com/in/sophienolan-bse)

### PROFILE

Building services engineering graduate from London South Bank University with a summer internship at a leading MEP consultancy. Assisted with HVAC and electrical design for **4 commercial projects** with a combined floor area of **25,000 m<sup>2</sup>**. Proficient in IES VE, Hevacomp, and AutoCAD MEP with a **2:1 (64% average)** and a growing expertise in energy modelling, Part L compliance, and sustainable building design.

### EXPERIENCE

*Jun 2025 – Aug 2025*

#### **Building Services Engineering Intern**, Hoare Lea, London

Completed a 12-week summer internship within the mechanical engineering team at Hoare Lea's London office.

- Assisted with HVAC design calculations for **4 commercial fit-out projects** including heating loads, cooling loads, and ventilation rates
- Produced **15 MEP layout drawings** in AutoCAD MEP for ductwork, pipework, and electrical containment routes
- Ran **6 energy models** in IES VE to assess Part L compliance and BREEAM energy credits
- Prepared **3 equipment specification schedules** for AHUs, FCUs, and VRF systems

*Sep 2023 – May 2025*

#### **Facilities Assistant (Part-time)**, King's College London, London

Supported the estates team with building maintenance coordination and energy monitoring.

- Logged and tracked **30+ maintenance requests per week** using the university's CAFM system
- Assisted with **4 energy audits** of campus buildings, recording HVAC and lighting system data

### EDUCATION

*Sep 2022 – Jul 2025*

#### **BEng (Hons) Building Services Engineering in Building Services Engineering**, London South Bank University, London

Graduated with Upper Second Class Honours (**2:1, 64% average**). Programme accredited by CIBSE and the Engineering Council.

- Final year project on optimising natural ventilation strategies for London office buildings, graded **69%**
- Relevant modules: HVAC Systems, Electrical Services, Lighting Design, Fire Safety, Energy & Sustainability

### SKILLS

HVAC Design & Calculations • Energy Modelling (IES VE) • AutoCAD MEP • Hevacomp • Building Regulations Part L • BREEAM Assessment • Electrical Services Design • Lighting Design (Dialux) • Equipment Specification • Technical Report Writing • Microsoft Excel • BIM (Revit MEP basics)

### CERTIFICATIONS

*Aug 2025 – Aug 2025*

**CIBSE Graduate Member**, Chartered Institution of Building Services Engineers

*May 2025 – May 2025*

**CSCS Green Card**, Construction Skills Certification Scheme

### LANGUAGES

English - Native • Polish - Conversational (B1)

### EXTRA CURRICULAR ACTIVITY

*Jan 2024 – Jun 2025*

#### **Mentor - LSBU Women in Engineering Network**

Mentored **3 first-year female engineering students** through their initial year of study.

- Held **monthly one-to-one meetings** and organised **2 networking events** with female engineers from Arup and Buro Happold